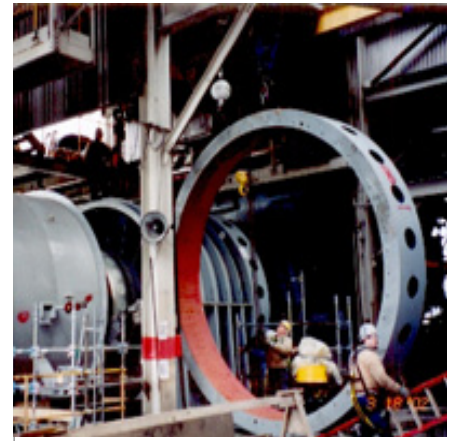


I.D. FAN INSTALLATION

RELIANT ENERGY
KEYSTONE POWER STATION
SHELOCTA, PENNSYLVANIA



DESCRIPTION

The Keystone Power Station, with a total capacity of 1,883 MW, burns bituminous coal and consists of two combustion engineering critical boilers, electrostatic precipitators and selective catalytic reduction systems. NAES Power Contractors was hired to remove and replace four Howden brand axial fans with new, larger capacity fans and larger motors.

SERVICES PROVIDED

During a low NOx-SCR project, NAES Power Contractors was brought in to manage the removal and replacement of the four Howden axial induced draft fans. The larger capacity of the new fans was required for the SCR installation. NAES Power Contractors performed the work during a scheduled outage.

- Setting of the new fans on the foundation provided
- Supervision, including weld technicians
- Demolition and removal of the existing fans, inlet boxes and diffusers
- Complete installation of new fans, alignment and installation of new motors, including the stator/rotor and pedestals

Headquarters

1180 NW Maple Street
Suite 200
Issaquah, WA 98027
425.961.4700

West Coast Office

2130 NE Griffin Oaks Street
Suite 700
Hillsboro, OR 97124
503.681.4664

East Coast Office

167 Anderson Road
Cranberry Township, PA 16066
724.453.2800

Midwest Office

24 W 15th Avenue
North Kansas City, MO 64116
816.472.4300

www.naes.com/npc



NAES Power Contractors provides world class maintenance and construction services for energy facilities, and is a wholly owned subsidiary of NAES Corporation, the global leader in third party power plant operations.